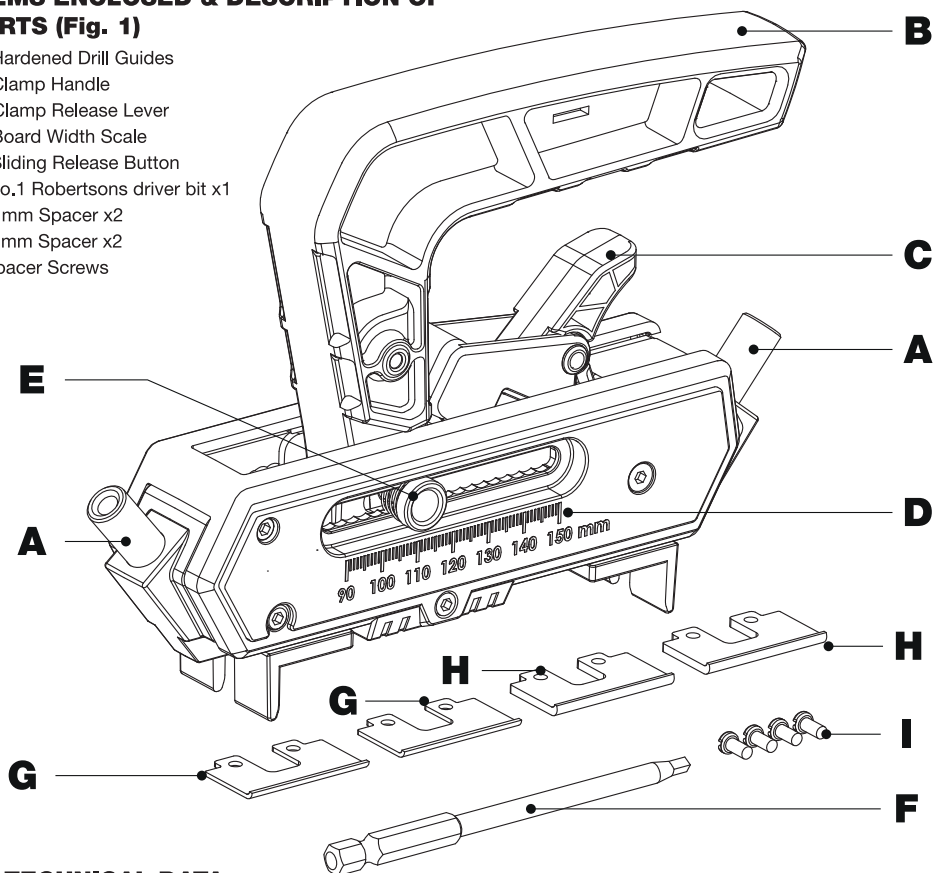


Fig. 1**ITEMS ENCLOSED & DESCRIPTION OF PARTS (Fig. 1)**

- A. Hardened Drill Guides
- B. Clamp Handle
- C. Clamp Release Lever
- D. Board Width Scale
- E. Sliding Release Button
- F. No.1 Robertsons driver bit x1
- G. 1mm Spacer x2
- H. 2mm Spacer x2
- I. Spacer Screws

**TECHNICAL DATA**

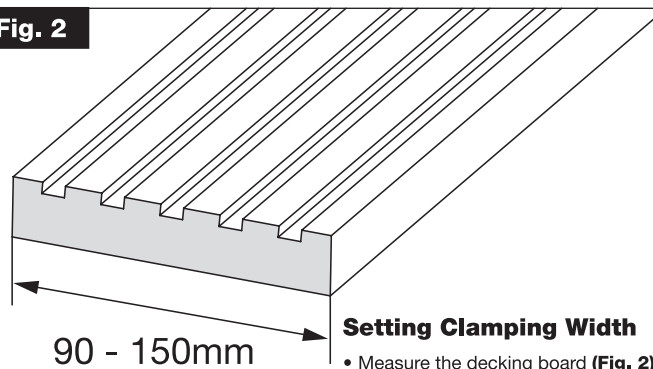
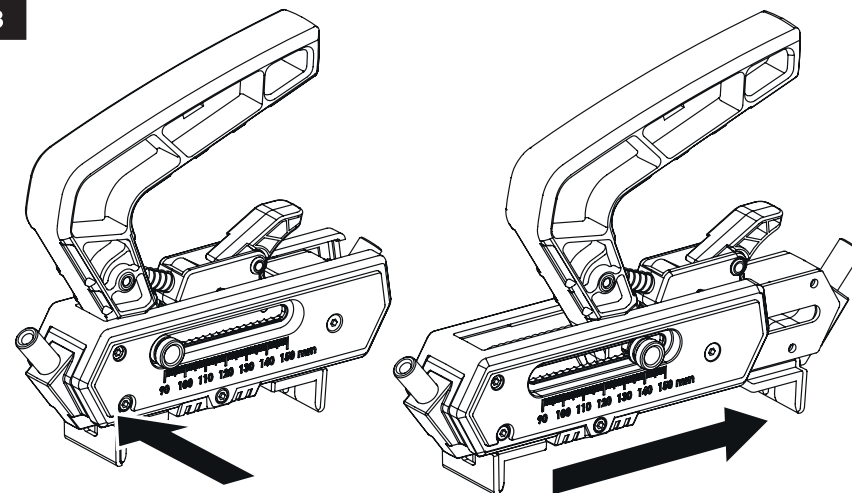
| | |
|----------------------|-------------------|
| Board Width Minimum | 90mm |
| Board Width Maximum | 150mm |
| Board Spacer Options | 3.5 / 4.5 / 5.5mm |

INTENDED USE

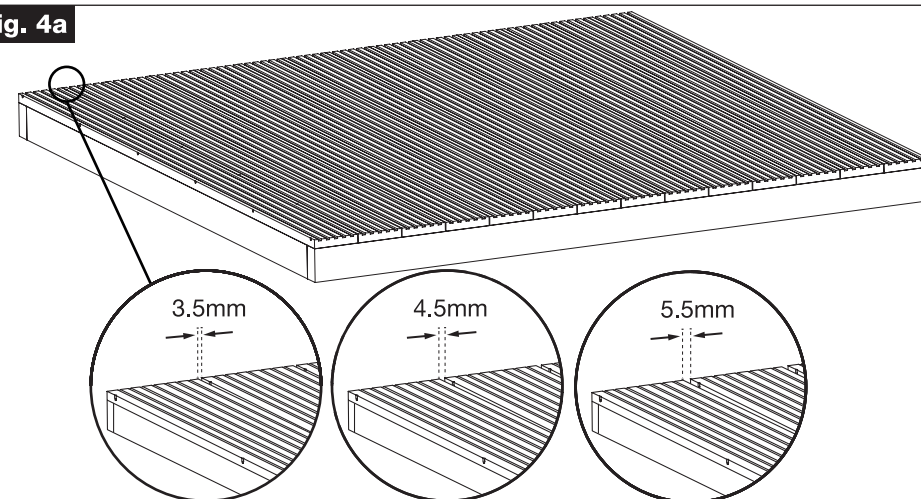
This Jig is used to fix decking boards to a decking frame without the need of drilling pilot holes.

ITEMS REQUIRED

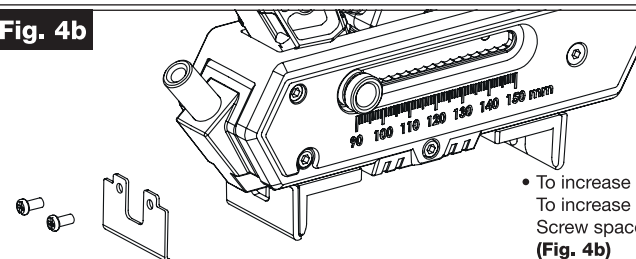
- Drill Driver
- Decking Screws

Fig. 2**Fig. 3**

- Set jig to nearest millimetre by pressing and holding the sliding release button. Move spacer jaws until correct measurement is achieved. (Fig. 3)

Fig. 4a**Decking Board Spacers**

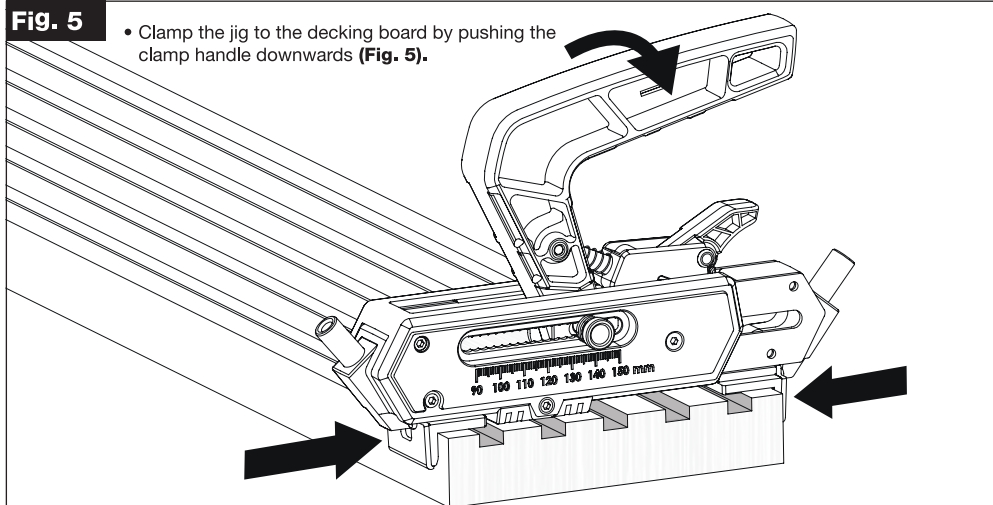
- Decide on board spacing required. 3.5mm / 4.5mm / 5.5mm options are available (Fig. 4a). The default spacing is 3.5mm without the use of additional spacers.

Fig. 4b

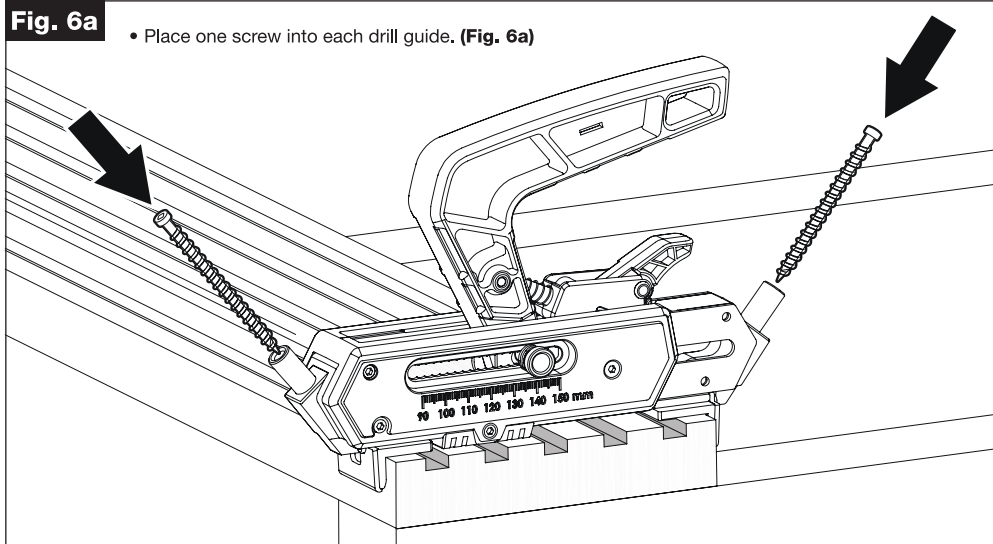
- To increase spacing to 4.5mm, add the 1mm spacer. To increase spacing to 5.5mm, add the 2mm spacer. Screw spacers to the jig using the screws provided (Fig. 4b)

Fig. 5

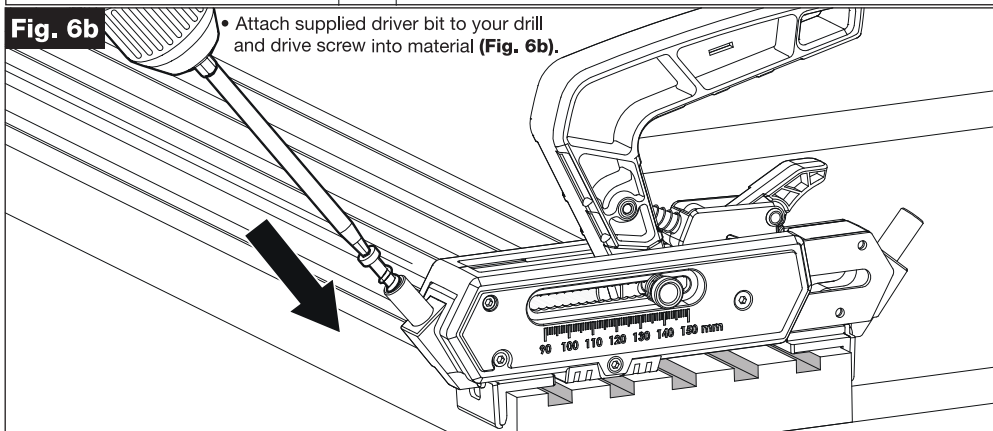
- Clamp the jig to the decking board by pushing the clamp handle downwards (**Fig. 5**).

**Fig. 6a**

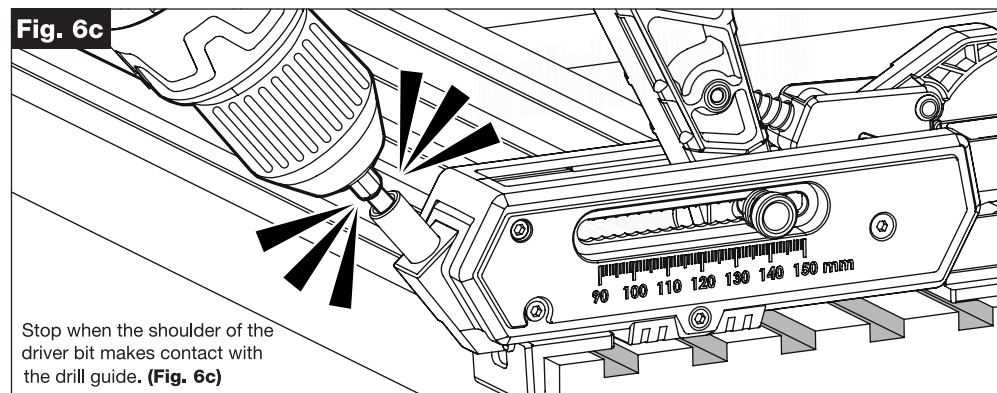
- Place one screw into each drill guide. (**Fig. 6a**)

**Fig. 6b**

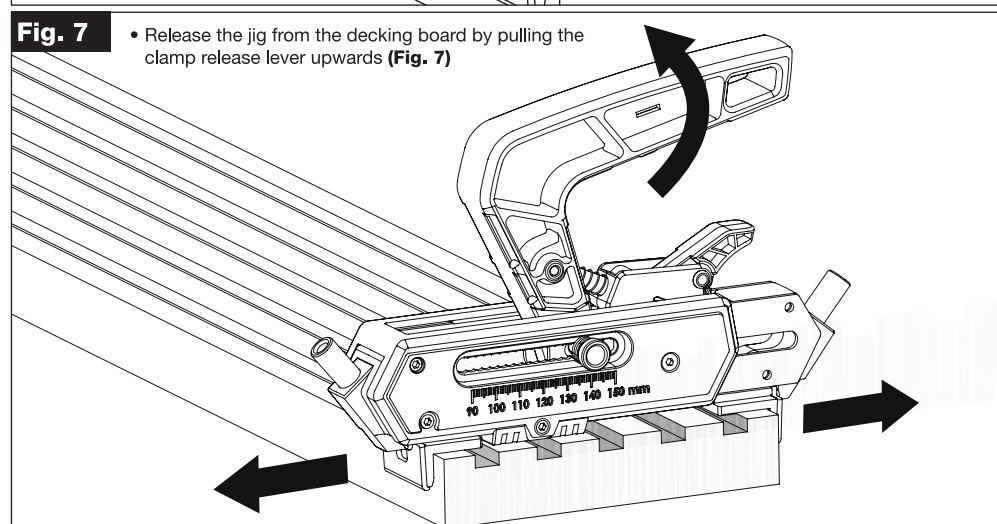
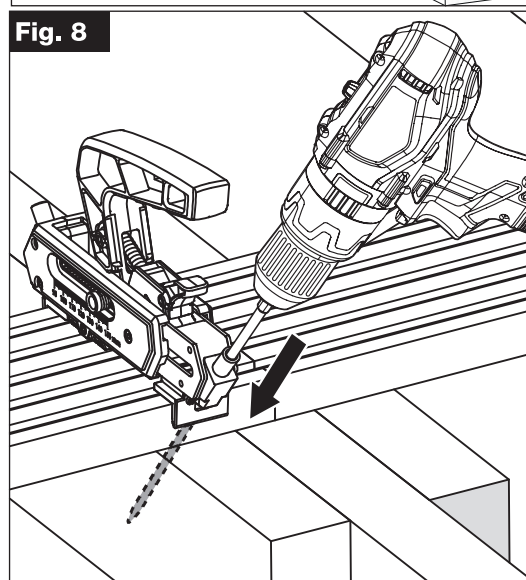
- Attach supplied driver bit to your drill and drive screw into material (**Fig. 6b**).

**Fig. 6c**

Stop when the shoulder of the driver bit makes contact with the drill guide. (**Fig. 6c**)

**Fig. 7**

- Release the jig from the decking board by pulling the clamp release lever upwards (**Fig. 7**)

**Fig. 8**

End / Butt Joints

- When completing a butt joint, thicken the joist (if necessary) to ensure the decking screw is $\geq 25\text{mm}$ from the end of the board (**Fig. 8**).

SAFETY

Please read and understand the safety points in these instructions as well as you power tool instructions.